



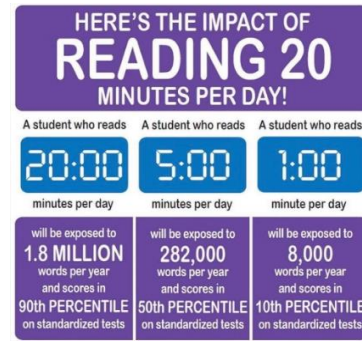
11th September 2023

Dear Parents,

This week, your child will come home with a new school planner. These planners were kindly paid for by our wonderful PTA and will be a fantastic tool to support learning at home.

At Woodthorne, we set the following expectations of all children for homework:

- 20 minutes of reading daily
- Spelling practise daily
- Times table practise daily



The planners will act as a record of the learning that children are engaging with at home and will replace the weekly Padlet. Padlet will still be used to keep a 'class library', so whenever children finish a book, they can add it to their class book shelf, but there will no longer be the daily tasks Padlet, since engagement with this was low at approximately 30% of the class making regular contributions.

The planners are organised into 'weeks'. Each week, your child will have a sticker placed in the 'spelling' part of their planner with their spellings on for that week (in theory, this means they won't lose them)! There are then boxes underneath with space to practise these spellings regularly. There are also 5 boxes headed 'reading record' where there is space to record the book, page number and any comments about how your child has read/what they've enjoyed or struggled with etc. It is the expectation that an adult will record in this reading record regularly (**a minimum of 3 times per week**). Our older children in KS2 may wish to record some of their own reading, however, adult comments/signatures are also required regularly. This will really help towards preparing them for secondary school, where often this is a requirement too.

Unfortunately, if a child loses their planner, school will not replace them. Parents will be expected to replace them at a cost of £5 each. They can be purchased from the school office.

All children are listened to read at least once per week in school. Their reading fluency is also tracked each term, where we record how many words each child can read per minute. Staff will be regularly looking at, and recording in, the planners to communicate reading fluency scores and ensure that all children are regularly engaging in reading at home.

We know you will support us in ensuring reading is always a priority at Woodthorne by reading to and with your child as much as possible at home.

Yours Faithfully,
T.Hinkley